

Arch Aids

Leather covered sponge rubber
schaphoid supports the medial
longitude arch.

youth's	4-13	No. 64201, pr.
boys'	1-5	No. 64202, pr.
women's	4-10	No. 64204, pr.
men's	6-13	No. 64205, pr.



Metatarsal Pads

Moulded Rubber

Rights & Lefts

(Approximate Size), No. M1

No. 5A R&L

Thickness At Highest Point - 3/16"

No. 3A R&L

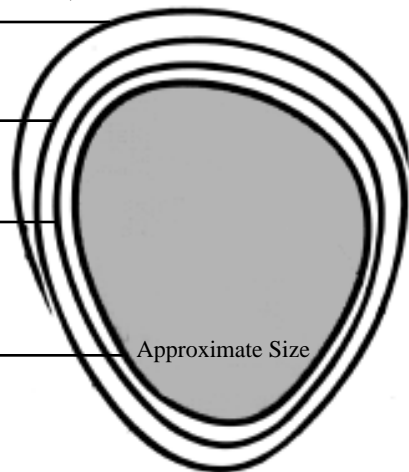
Thickness At Highest Point 5/16"

No. 2A R&L

Thickness At Highest Point - 5/16"

No. 1A R&L

Thickness At Highest Point - 13/64"



Metatarsal Bars

PPT with adhesive Back

(not actual size)
Sizes Small,
Medium, Large
#4465, **dz.**

Synergel Gel / Poron

(not actual size)
One Size
#180000, **pr.**

PPT with adhesive Back

(Not actual size)
Sizes: S,M,L,XL
#4466, **dz.**

Felt

(Not actual size)
Sizes: S, M, L
#M450, **pr.**

Ground Sponge Rubber

(Not actual size)
Sizes:S, M, L, XL
MOM1, **pr.**

Synergel Gel / Poron

(not actual size)
One Size
#170000, **pr.**

Molded Sponge Rubber Metatarsal Bar

3/8" at highest point
#M500, **pr.**

Approximate Size

Moulded Rubber Heel Wedges

Used to control heel valgus
and pronation. These wedges
are made of molded sponge
rubber.

Sold by the unit -
Right or Left
Product ID: M428

No. 428 L

Thickness At Highest Point -1/4"

No. 428 M

Thickness At Highest Point - 1/4"



No. 428 SM

Thickness At Highest Point -3/16"

Approximate Size